

Are you still coping with the **MANUAL** insertion headaches:

- \*Low efficiency
- \*Poor quality
- \*Difficult processing
- \*High defective and scrap rate
- \*High manufacturing costs



# S7020 Series Insertion Machine

## S7020 Series Insertion Machine-a Multifunctional Combination

- 1.S7020T **Terminal** Insertion machine (2 insertion heads and 2 reel feeder / or 2 bowl feeder)
- 2.S7020E **Eyelet** Insertion machine (2 insertion heads and 2 Bowl feeder)
- 3.S7020P **PIN** Insertion machine (2 insertion heads and 2 reel feeder / or 2 Bowl feeder)
- 4.S7020S **Tact Switch** Insertion machine (2 insertion heads and 2 Bowl feeder)
- 5.S7020F **Oddform** Insertion machine (2 insertion heads and 2 Bowl feeder /or 2 tube feeder)

I 'll never say tired,  
just need regular  
maintenance !



## Specifications

- Speed: 12,000 CPH
- PCB Size: Max. 400mm \* 400mm
- PCB Thickness: 0.76-2.36mm
- Components available: Pin,Tact Switch,Terminal, Eyelet
- 2 Heads
- Machine dimension: 1220mm\*1000mm\*1600mm (L\*W\*H)
- Machine weight: 1500KG
- Power supply: Single Phase 220VAC, 50/60HZ, 1.0KVA
- System Protection: Built-in software protection
- Air pressure: 0.4-0.6Mpa/0.3M<sup>3</sup>/Min
- Data input: USB interface input (EXCEL format)
- Control System: English version interface (WINDOWS system control platform) LCD monitor
- PCB transfer mode: automatic (left to right or right to left)

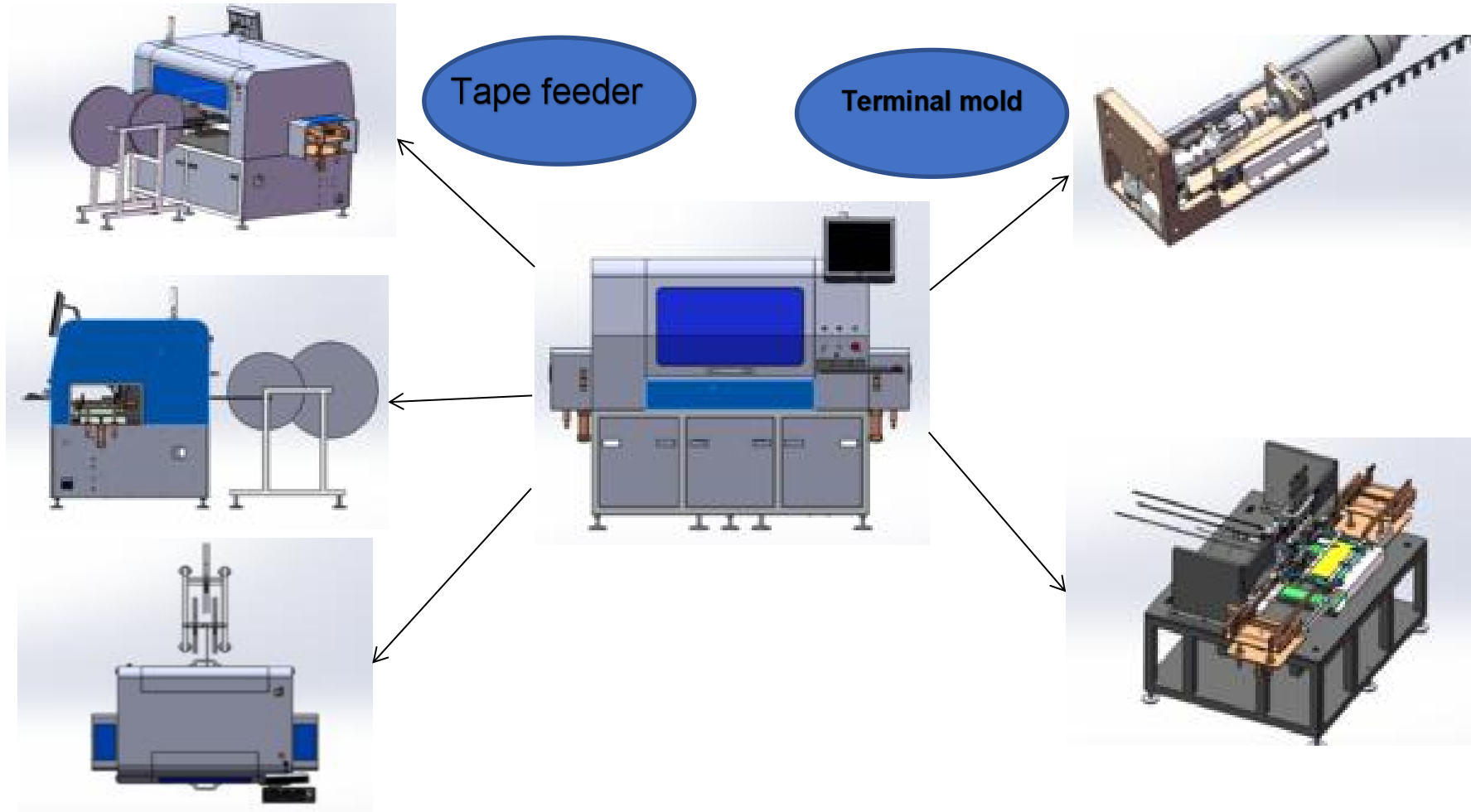
\*One machine can replace at  
least **10** labors

\*Price **30%** lower than  
foreign brands

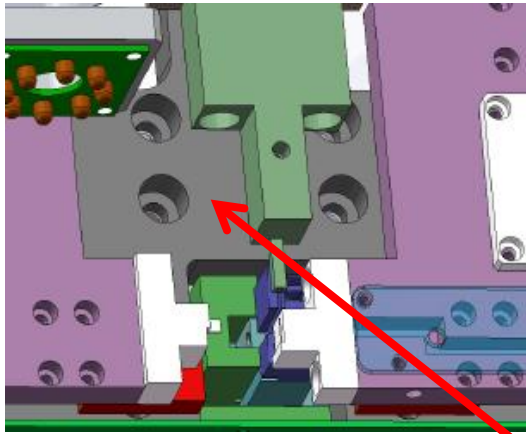
\*Faster speed, lower  
maintenance cost

\*Simple operation, grasp  
with **1** day training

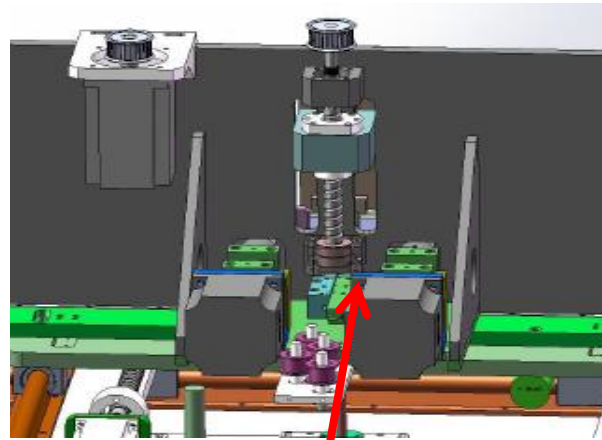
## Structure



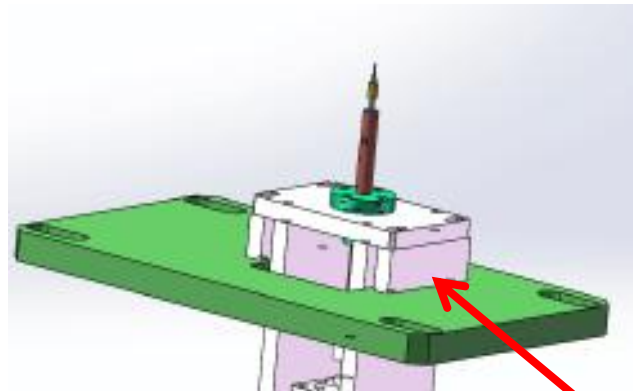
# S7020 Series Insertion Machine



Insertion head



Feeder

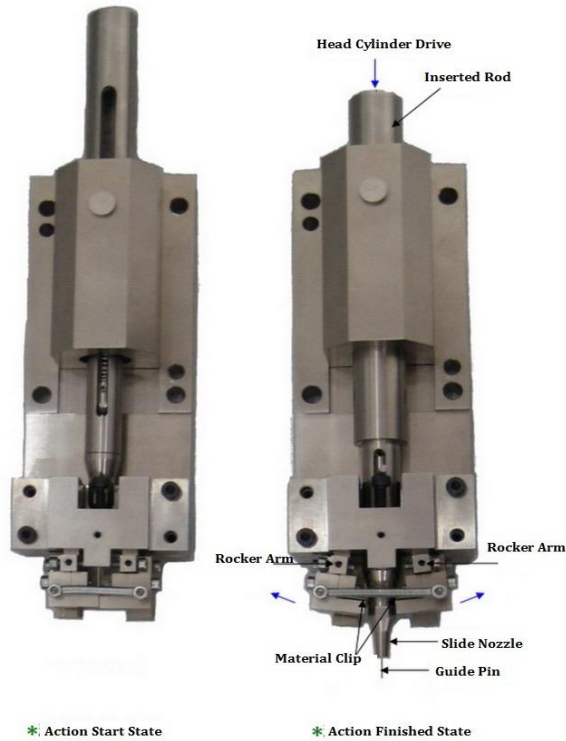


Clinching base(PCB support& miss check)



Vision programming

## Machine Insertion Head ASSY



Connect to motor

Head driver

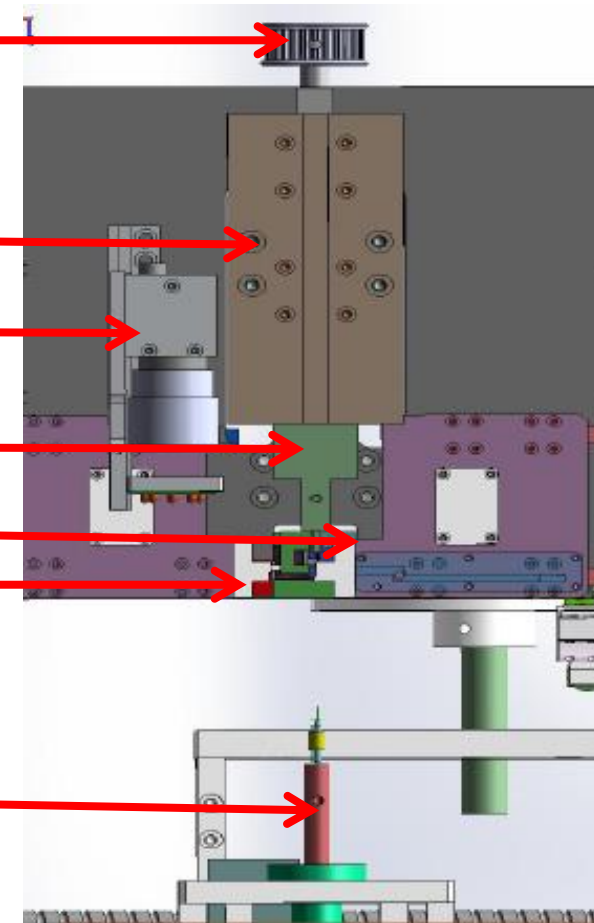
Programming camera

Nozzle

R cutter

L cutter

Pedestal





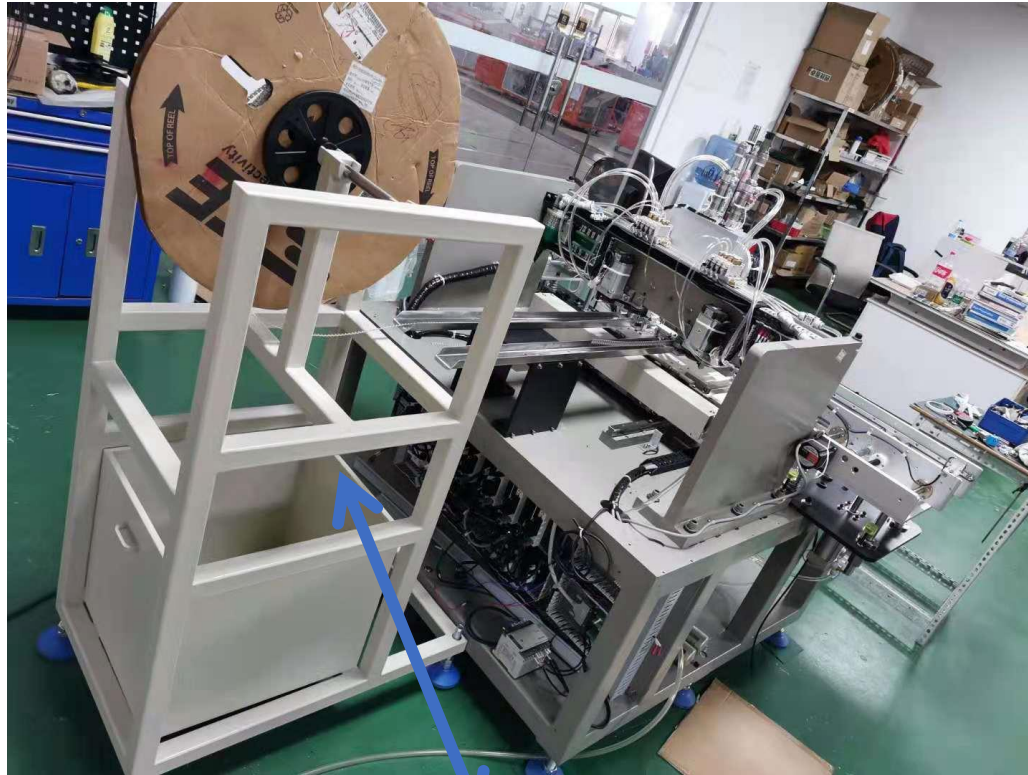
## Clinching system

If the detection system detects that the insertion has completed successfully Go to the next step, if it is not completed, the machine will stop and report an error.) After that, the X-Y workbench will send the PCB completed by the insertion to the right track



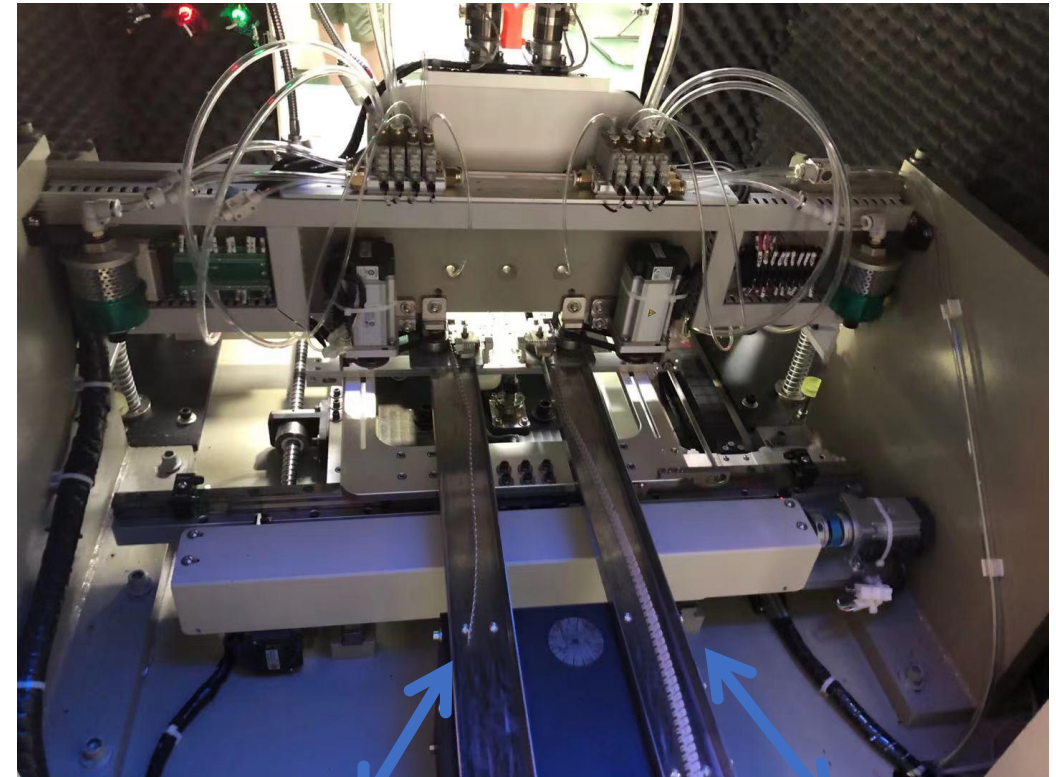
# S7020 Series Insertion Machine

## Feeding and Cutting system



*Material tray*

Change feeder/gripper according to the component



*Feeding track(L)*

*Feeding track(R)*



## Application industry

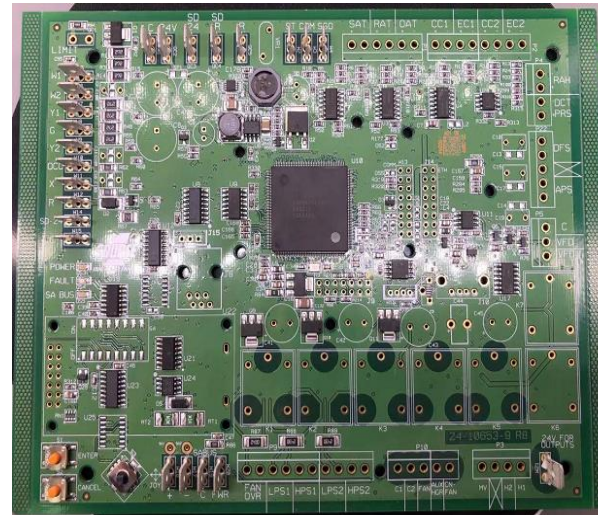
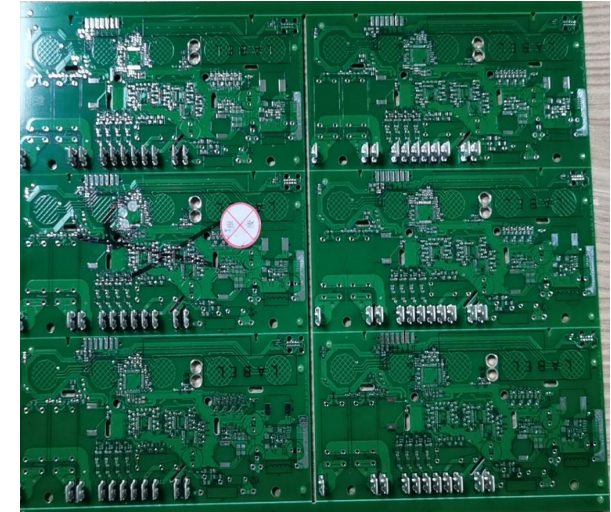
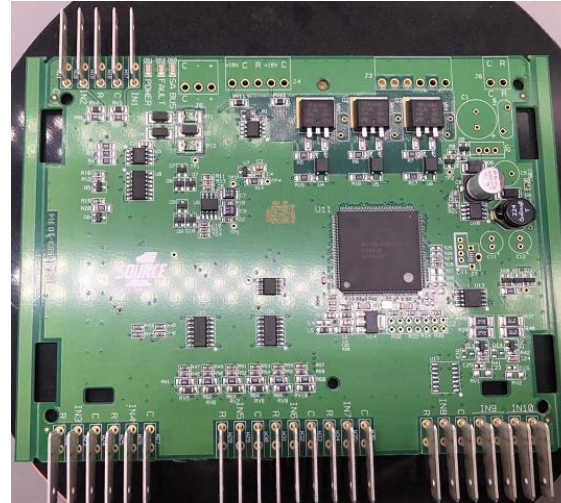
Home appliance

Car

Power

Digital watches

Electronic components, etc



# Best After-sales service

- **7x24 Worldwide Support**
- **Free Installation/ Training**
- **1 day lead-time (spare parts)**
- **1 Month customize solution**



# Welcome Inquiry

Please visit [www.smthelp.com](http://www.smthelp.com)

Find us more <https://www.facebook.com/autoinsertion>

Know more our team <https://cn.linkedin.com/in/smtsupplier>

Welcome to our factory in Shenzhen China

See more machine working video, please Youtube [Auto Insertion](#)

Google [Auto+insertion](#), to get more information

Looking forward to your email [info@smthelp.com](mailto:info@smthelp.com)